

Treatment Planning

in a

Bad Economy

Charles D. Stewart, DMD

Douglas R. Dill, DDS

Jerry Michels, DDS

Charles Rodgers, DDS

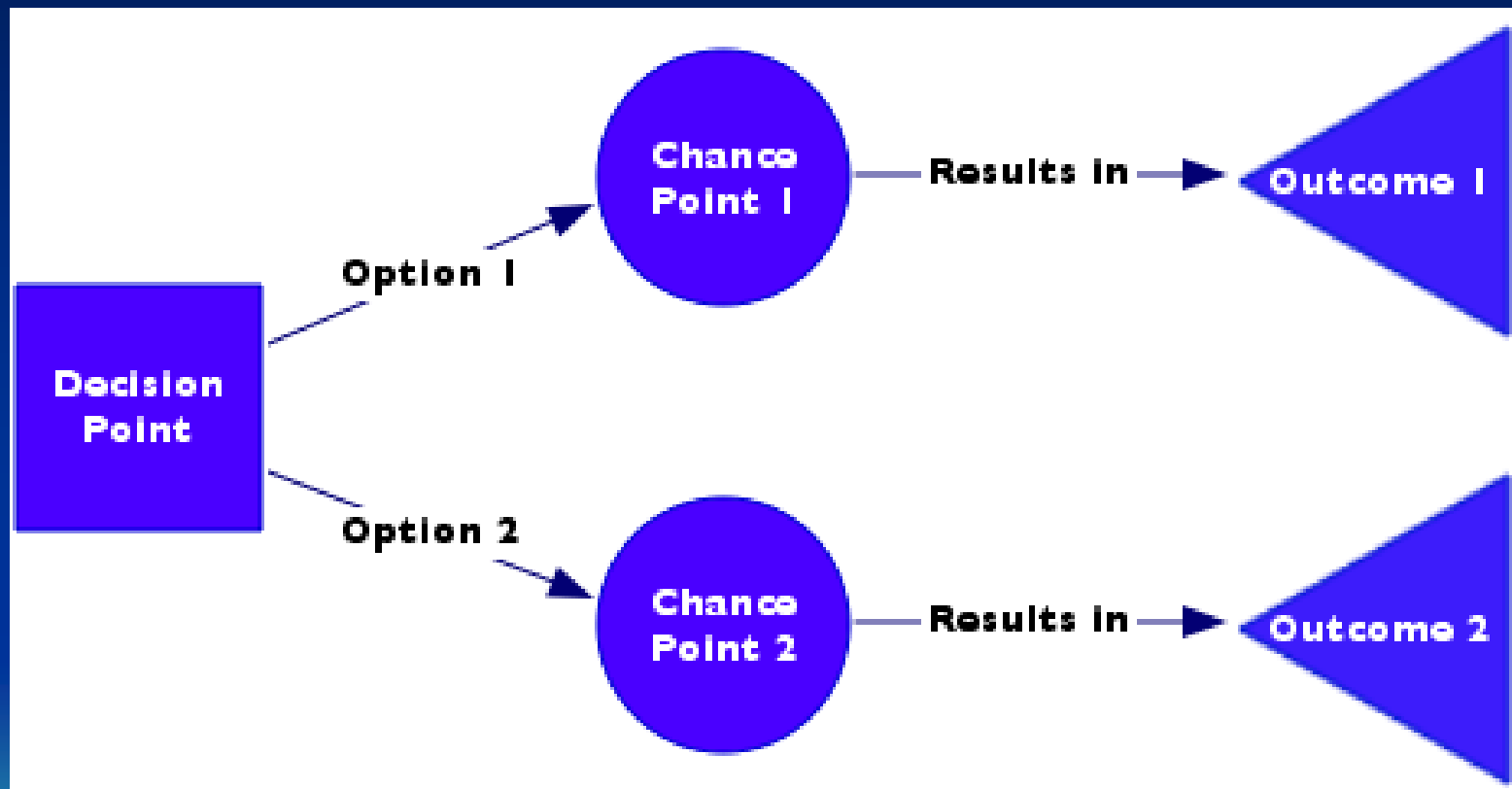


Treatment Planning Decision Tree Analysis

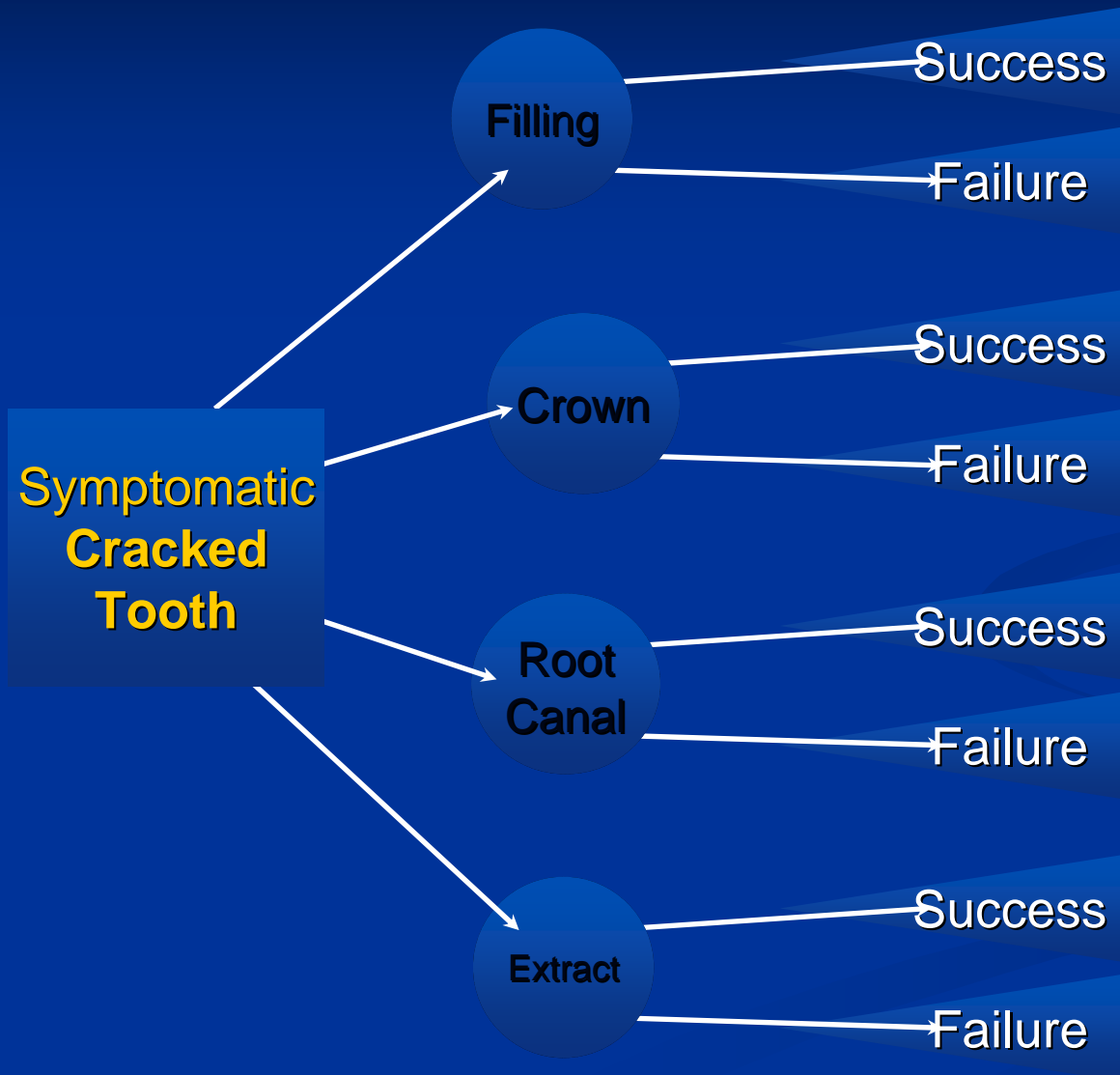
Thank you to
Jonathan Rudin, DDS
For the use of his information on this



Decision Tree Analysis



Decision Tree - Example



Cracked #14

Modified Decision Tree

Treatment	Initial Cost	Adjacent Tooth Involvement	Maintenance Ease	Chewing Comfort	Longevity
Implant	High	None	Easy	High	High
Bridge	High	Significant	Moderate	High	Moderate
RPD	Moderate	Slight	Moderate	Moderate	Slight
No TX	None	None	Easy	None	???

Edentulous Space

© 2009 Jonathan Rudin, DDS, MS, MPH

Panel Discussion



Reader's
Digest

How Dentists
Rip Us Off

That was 1997!



CADP 2009

This is NOW!

Who Needs

Reader's Digest?



Meet our Patient

Each panelist received:

- The radiographs
- The diagnostic information and clinical findings
- Instructions to formulate a treatment plan to treat the patients needs





1/8/2009



1/8/2009



1/8/2009



1/8/2009



1/8/2009



1/8/2009



1/8/2009



1/8/2009



1/8/2009



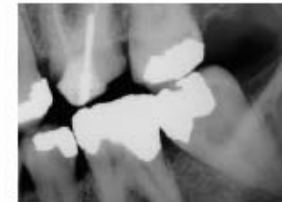
1/8/2009



1/8/2009



1/8/2009



1/8/2009



1/8/2009



1/8/2009



1/8/2009



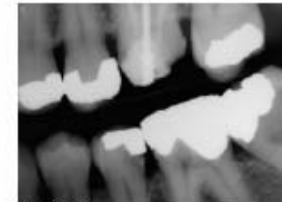
1/8/2009



1/8/2009



1/8/2009



1/8/2009



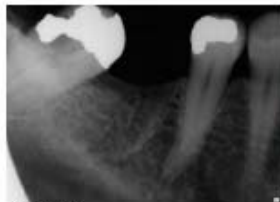
1/8/2009



1/8/2009



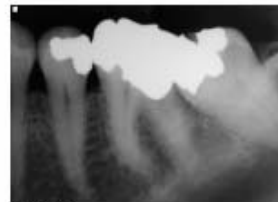
1/8/2009



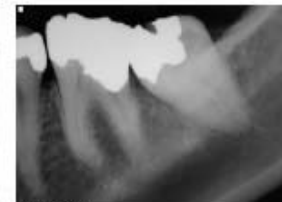
1/8/2009



1/8/2009



1/8/2009



1/8/2009



1/8/2009

Outcomes

Total Cost of Treatment

- \$10,675.00
- \$11,215.00
- \$16,225.00
- **\$40,425.00**



Questions ?

